

The Port of Broome is a security regulated Port with an approved Maritime Security Plan endorsed by the Department of Home Affairs. KPA complies with the Maritime Transport and Offshore Facilities Security Act 2003 and Regulations 2005 and enforces the requisite security access necessary for the three different security levels.

The port currently operates two terminals. The KPA Terminal 1 security arrangements adhere to the Port's Maritime Security Plan, while the KMSB Terminal 2 follows compliance requirements set out in its own KMSB Maritime Security Plan.

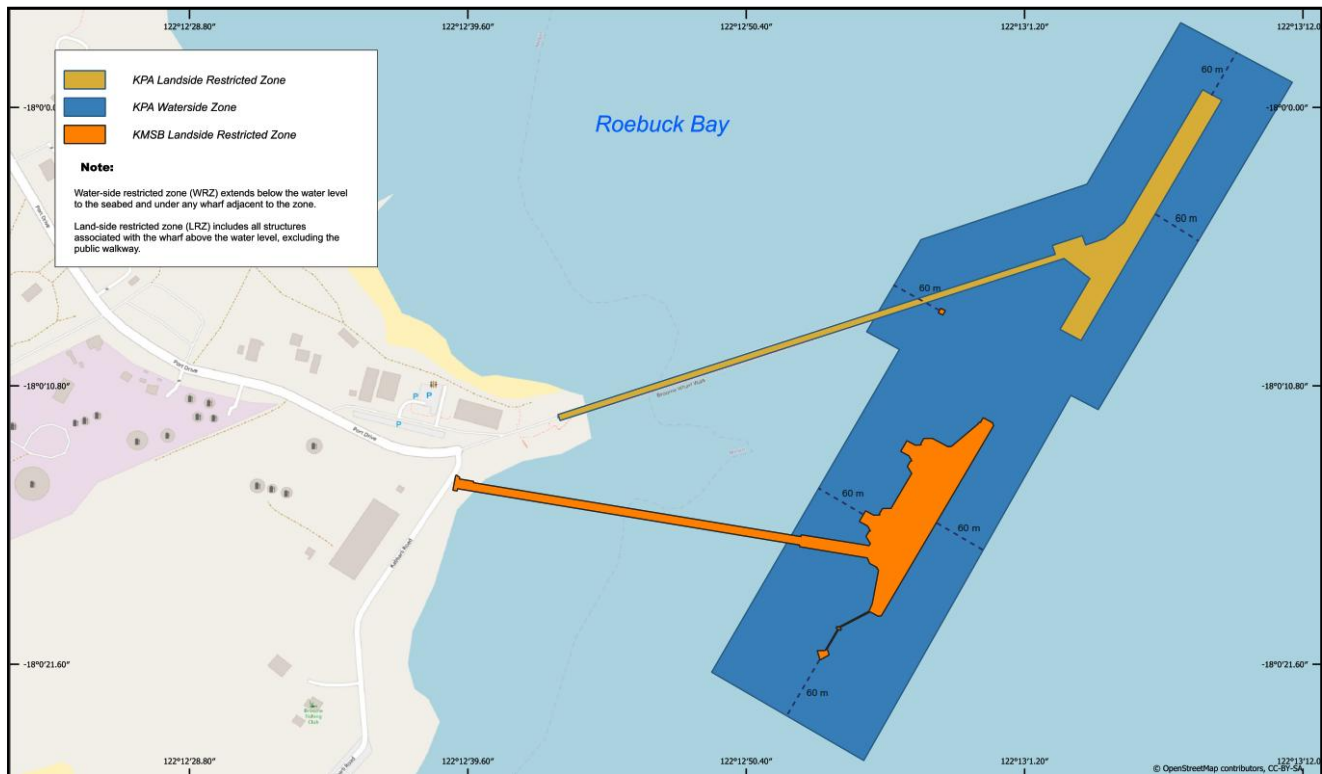
**Where are the Security Regulated areas at the Port?**

**LRZ – Landside Restricted Zone:** This is the area from the Security Gate to the wharf including the jetty roadway (Jetty Neck) and incorporates the whole structure down to the seabed.

**KPA LRZ :** Marked in Yellow – Requirements as per KPA Security Plan.

**KMSB LRZ:** Marked in Orange – Requirements as per KMSB Security Plan.

**WRZ – Waterside Restricted Zone:** This is an area extending from the Jetty structure(s) out 60m in all directions. Vessels must not enter the WRZ without prior permission from Security.



*Figure 1. Diagram Illustrating Maritime Security Zone (MSZ)*

**Exclusion Zone:** As part of the Port's Maritime Security Plan, a 60m exclusion zone is in place around both KPA and KMSB terminals. All vessels (including recreational users) must remain clear unless approved to enter for authorised operational reasons.

Unauthorised entry to a Maritime Security Zone – Refer Section 6.45 of MTOFSA Regulations 2003, may incur a fine of 50 penalty units (approximately \$16,500 AUD)

### **Who needs an MSIC (Maritime Security Identification Card) and why?**

Anyone working unescorted in a maritime security zone needs an MSIC. This includes people both working on an irregular or seasonal basis and have an operational need to access the LRZ at least once a year. An MSIC shows that the card holder is background checked and cleared to enter and work in secure areas.

### **Who does not need an MSIC?**

On duty members of the Australian Defence Force (ADF), or the Police wearing their ID. Customs (DAFF) or AMSA Officers if entry is required in the course of their duties. Ambulance, Rescue or fire service officers who are responding to an emergency.

### **How do I apply for an MSIC?**

You can apply for an MSIC through an issuing body: [Link to Auscheck site with MSIC issuing bodies.](#)

### **Can I request a temporary MSIC while waiting for my MSIC to be issued?**

KPA may issue a temporary MSIC provided evidence of application approval and background check being completed (by the issuing authority) has been provided to KPA along with a written request from the applicant.

The Temporary MSIC will normally be issued for a period up to 1 month.

### **What are MSIC holder responsibilities?**

While in an MSZ, an MSIC card must be worn at or above waist height, at the front or side of the body, or on a band around the upper arm. Failure to display a MSIC may incur the following: fine 5 penalty units [\$1,650 AUD] (1<sup>st</sup> Offence); 10 penalty units [\$3,300 AUD] (2<sup>nd</sup> Offence); 20 penalty points [\$6600] (3<sup>rd</sup> Offence). Refer Section 6.07J of MTOFSA Regulations 2003.

If your MSIC is lost or stolen, a statutory declaration / police report must be submitted to the issuing authority within 7 days. Failure to notify within 7 days may incur a fine of 10 penalty units (approximately \$3,300 AUD). Refer to Section 6.08R of MTOFSA Regulations 2003.

An MSIC must be returned to the issuing authority within 30 days after it expires. Failure to return within 30 days after expiry date may incur a fine of 10 penalty units (approximately \$3,300 AUD). Refer to Section 6.08P of MTOFSA Regulations 2003.

### **What is a Port Access Card?**

For the KPA Jetty/LRZ: In addition to a MSIC, anyone requiring unescorted access on the Wharf must have a KPA Port Access card. You may obtain an access card from the KPA office after successfully completing the KPA induction, which is available on the KPA website.

For the KMSB Jetty/LRZ: Users must ensure compliance with KMSB access requirements.

### **What is the role of a Port Security Guard?**

Security Guards are required to control access of vehicles and record details of persons entering and leaving the LRZ. They can request any Port user to produce their MSIC or relevant ID for verification, and upon failure to do so restrict the users access to the MSZ. The Security guard can also deny access to a user who fails to demonstrate an operational need to enter the zone.

KMSB employs separate security guards to control access to the KMSB facility.

**What requirements apply for accessing the MSZ as a crewmember or passenger?**

For vessels calling KPA terminal, all vessels must provide a copy of the planned visitors and passengers to KPA security at least 24 hours prior to arrival. The list must include the full name, Passport or Government ID details of each crewmember or passenger.

All crewmembers and passengers must transit from the Bus/Vehicle to the vessel, or vice versa, without any undue delay.

Crew members and passengers accessing the KMSB Jetty/LRZ must contact KMSB terminal and comply with the relevant KMSB security processes.

**What requirements apply for accessing the MSZ as a visitor?**

All visitors wishing to access the KPA Jetty/LRZ must:

1. Complete a '[Visitor Access Form](#)' on the KPA website.
2. Be accompanied by a person holding a valid MSIC and Port Pass (The Escort).
3. Not have entered the Maritime Security Zone more than 5 times within the past 12 months.
4. Must produce a government approved valid photo ID when requested by KPA Security staff.

Users wishing to access the KMSB Jetty/LRZ must contact KMSB terminal and comply with the relevant KMSB security processes.

**What are my responsibilities if I act as an 'escort' for a visitor?**

When swiping at the KPA Security Gate you must verbally engage with the security guard and declare your visitor(s).

If you are responsible for escorting a person into a Maritime Security Zone, you must continuously monitor that person and remain with them. Failure to do so could be an offence under the MTOFSA Reg 2003. You may incur a fine of 5 penalty units (approximately \$1,650 AUD).

For any further information regarding KPA security arrangements, contact:

[security@kimberleyports.wa.gov.au](mailto:security@kimberleyports.wa.gov.au) or KMSB security arrangements, contact: [operations@kmsb.com.au](mailto:operations@kmsb.com.au)

**Harbour Master / Port Security Officer  
Kimberley Ports Authority**